

# ISO 14001

ISO 14001 Standard for Environmental Management Systems is a systematic framework for managing the impacts our organization has upon the environment.

- Management committment
- Employee engagement
- Meet legal and corporate requirements
- Reduce environmental impacts through:
  - Water conservation
  - Energy management
  - Waste management & reduction
  - Pollution prevention
- Continual improvement

For more information contact site EMR:  
CULLEN KUNKEL 310-244-8866



## Sustainable Production

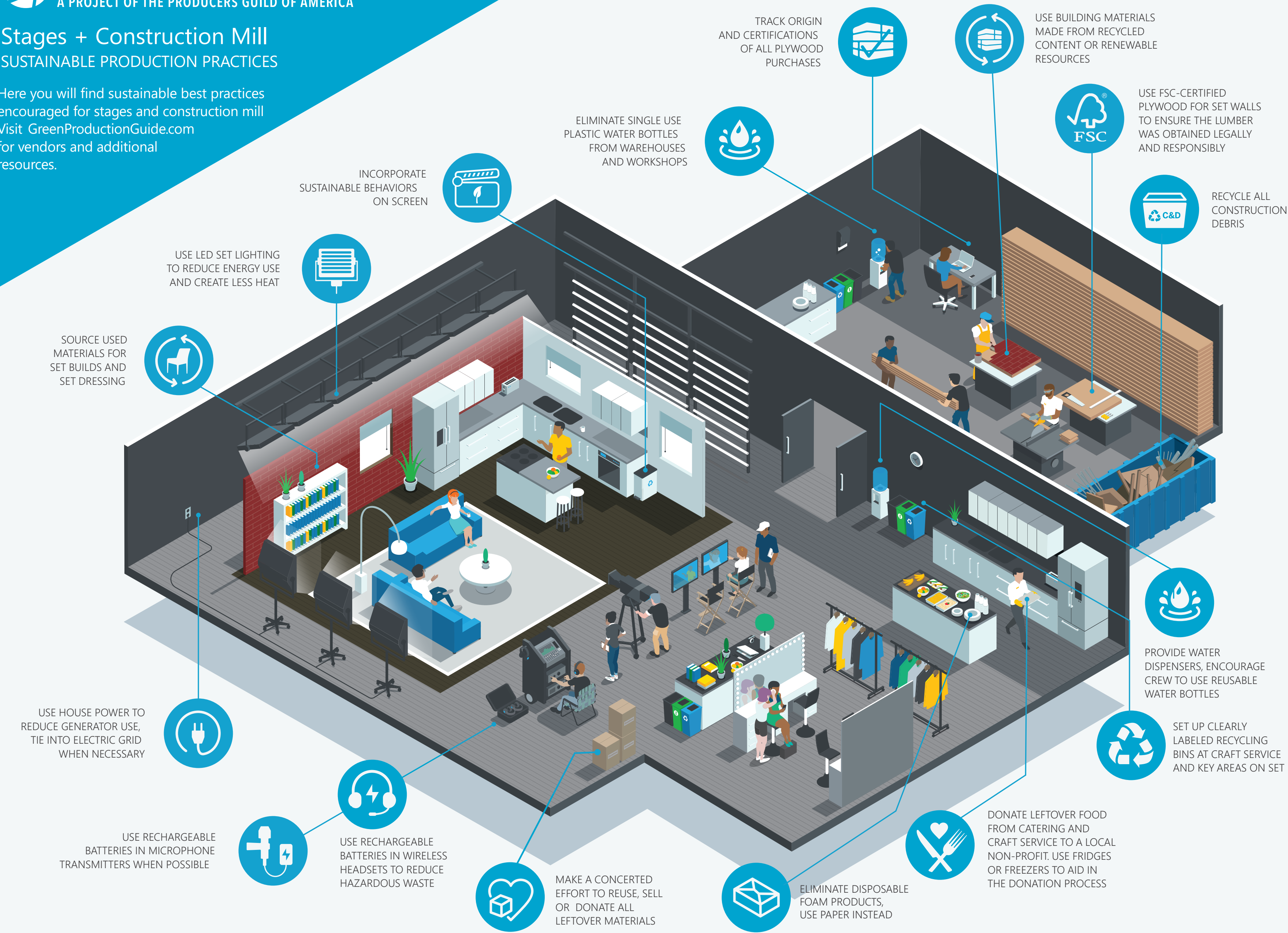
### GREEN PRODUCTION GUIDE

A PROJECT OF THE PRODUCERS GUILD OF AMERICA

#### Stages + Construction Mill

SUSTAINABLE PRODUCTION PRACTICES

Here you will find sustainable best practices encouraged for stages and construction mill  
Visit [GreenProductionGuide.com](http://GreenProductionGuide.com) for vendors and additional resources.



**Adhere to local regulations:**  
Idling for longer than 5 minutes is prohibited in California. Polystyrene (#6 plastics) are banned in Culver City.

**Contact information:**  
For waste management questions call x4-8899. For all other sustainable production questions, call x4-4909.